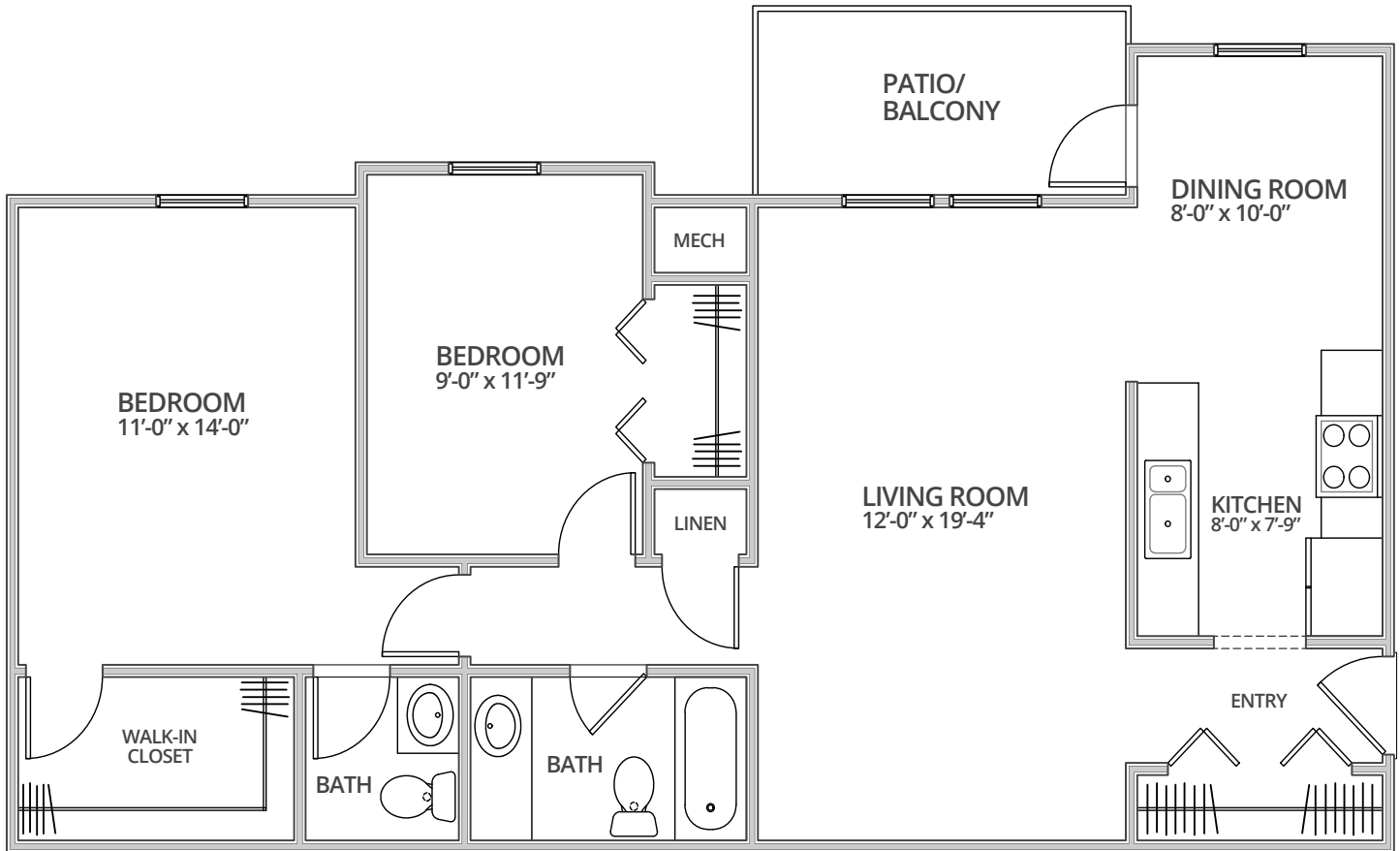


# OXFORD PLACE APARTMENTS

## The Plymouth

2 Bedroom  
1 & 1/2 Bath  
900 Sq. Ft.\*



*\*Square footage calculations were based on basic plan dimensions and may vary from the actual square footage of specific as built apartments.*

2143 43rd St SE – Grand Rapids, MI 49508  
**P** (616) 455-0140 – **F** (616) 455-2676  
[www.peak-management.com/oxford-place](http://www.peak-management.com/oxford-place)