



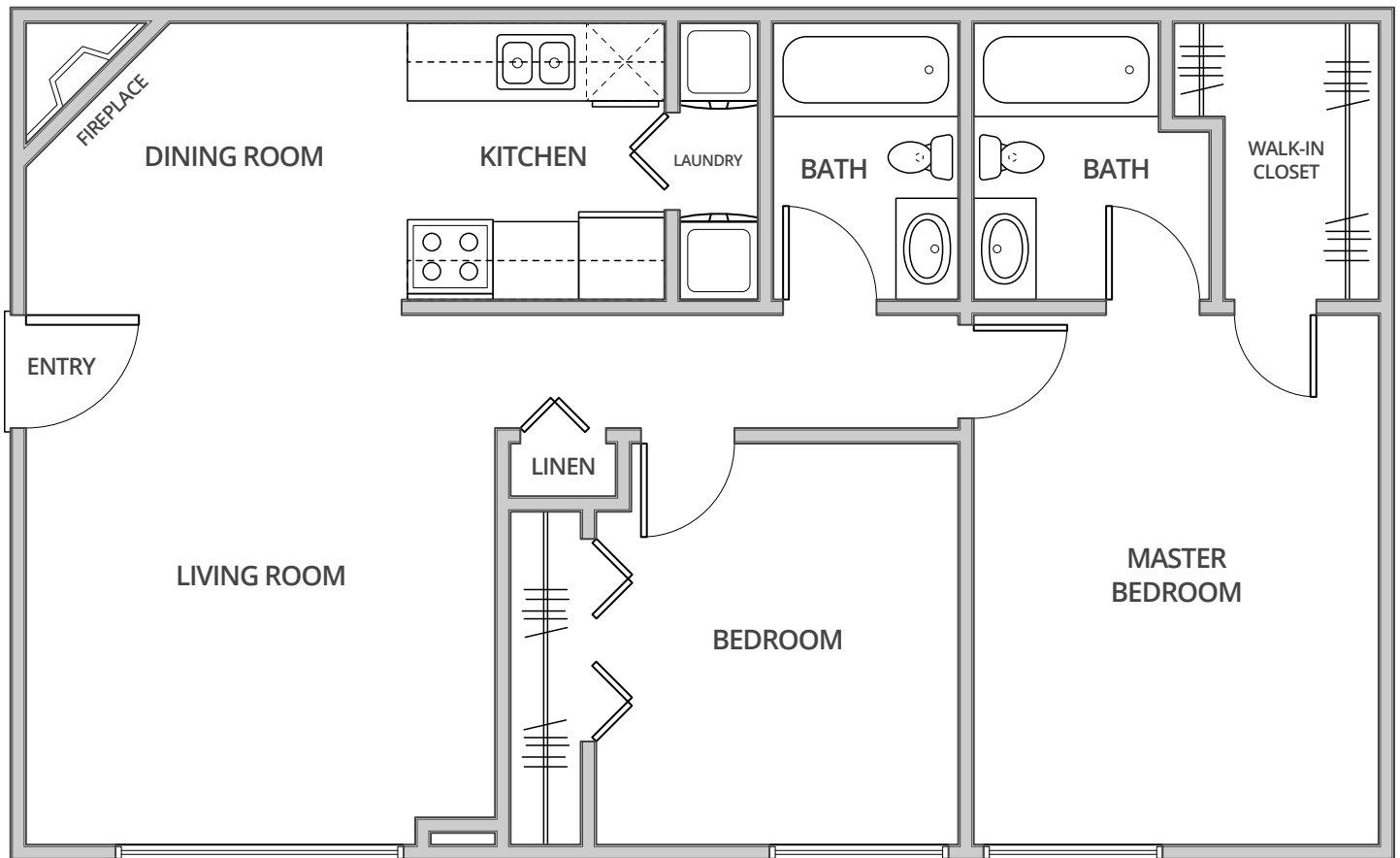
Ashton Lake
apartments

The Deluxe Two Bedroom

2 Bedroom

2 Bath

1000 Sq. Ft.*



**Square footage calculations were based on basic plan dimensions and may vary from the actual square footage of specific as built apartments.*

2610 Marfitt Road, East Lansing, MI 48823
P (517) 336-8900 – **F** (517) 339-9878
peak-management.com/ashton-lake